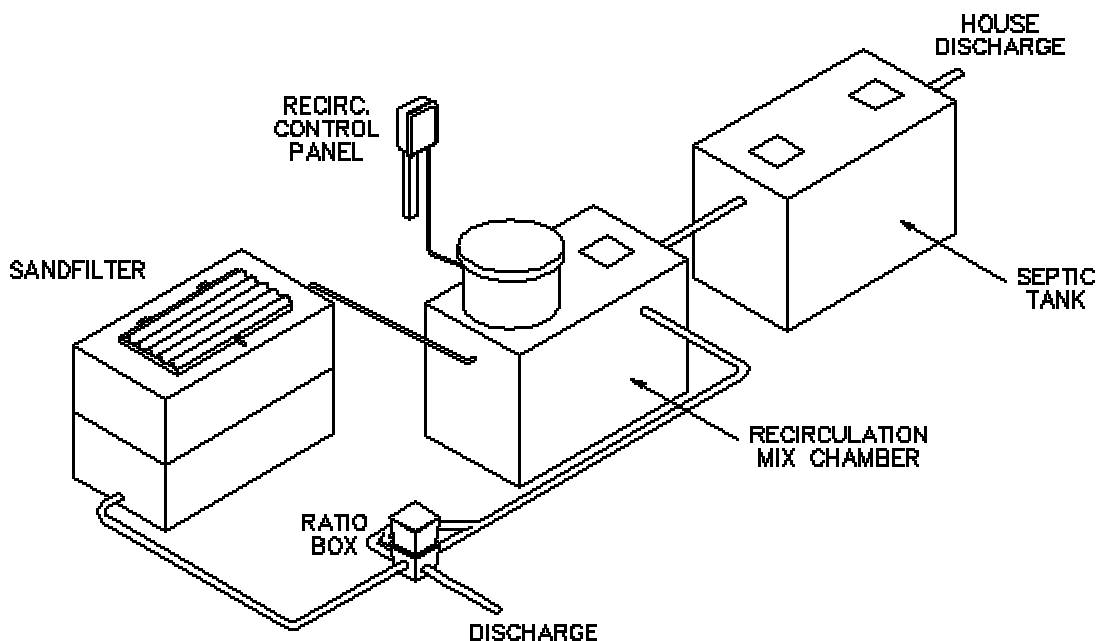


AMERICAN SAND FILTERS

RECIRCULATING SAND FILTER SYSTEMS

RATIO BOX



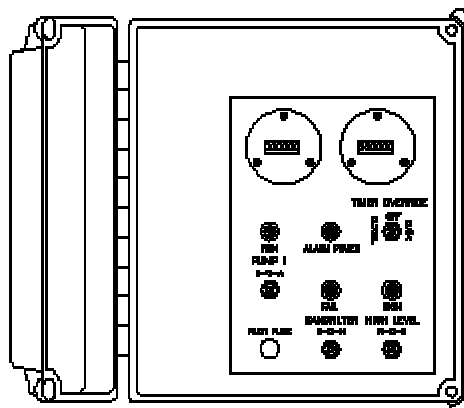
SANDFILTER EFFLUENT QUALITY WITH 40% NITROGEN REMOVAL

The American Manufacturing Company, Inc. Recirculating Sand Filter Package design with a Ratio Box is based the EPA design Standard. The system is designed to provide enhanced effluent quality with simple maintenance and very low operational costs. The Ratio box allows the final discharge to be elevated with the sand filter therefore not determined by the elevation of the pump station. The filter rests during low flow so filter runs may be longer but the quality may be detracted from during restart after long rest periods.

TANKS ARE AVAILABLE WHEREVER SEPTIC SYSTEMS ARE SOLD. Most septic tank manufacturers should already have the necessary forms that can easily be adapted to configure this system. Recirculating filters differ from single pass (intermittent) filters in that a Recirculating filter is much smaller and a device is required to return filtrate to the dosing tank. Coarser media can also be used because of the recirculation to provide trouble-free operation.

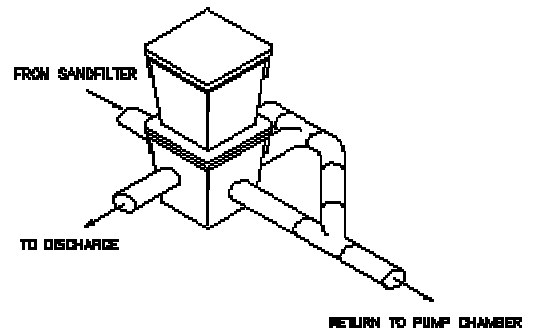
CONTROL PANEL WITH FOUR FLOATS

The control has a Nema 1 or Nema 4X rated enclosure with removable aluminum back plate for component mounting, IEC rated pump contactor, adjustable pump run timer, high level peak enable circuit, Hand-Off-Auto toggle switches for all operations, pump run light, indicator lights, separate control and pump breakers, control fuse, and finger-safe terminal blocks with a neatly bundled wiring harness. The Control unit is U.L. APPROVED AND LABELED. The time dosed system may be either with a twenty-four hour selection or a repeat cycle timer, both may have manual override capability to completely operate the system while bypassing the timers.



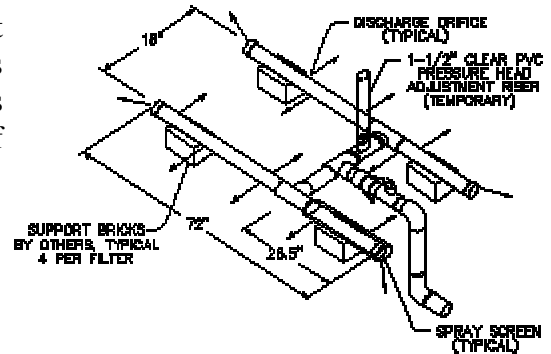
RATIO BOX

The Ratio-Box is suitable for connection to 4" schedule 40 PVC or 4" S & D PVC pipe. The box is non-corrosive hard plastic suitable for use in this environment and will be provided with an at grade riser. The return effluent shall enter the box and split the flow up to 5 ways.



DISTRIBUTOR LATERAL SETS

The laterals are sized for the pump and provide suitable operation under a wide range of heads. It provides an excellent method to disperse the effluent over the bed. A lateral curve is available and will allow the designer to determine heads necessary to operate the system. Design heads at the lateral of 1' to 2' are recommended.

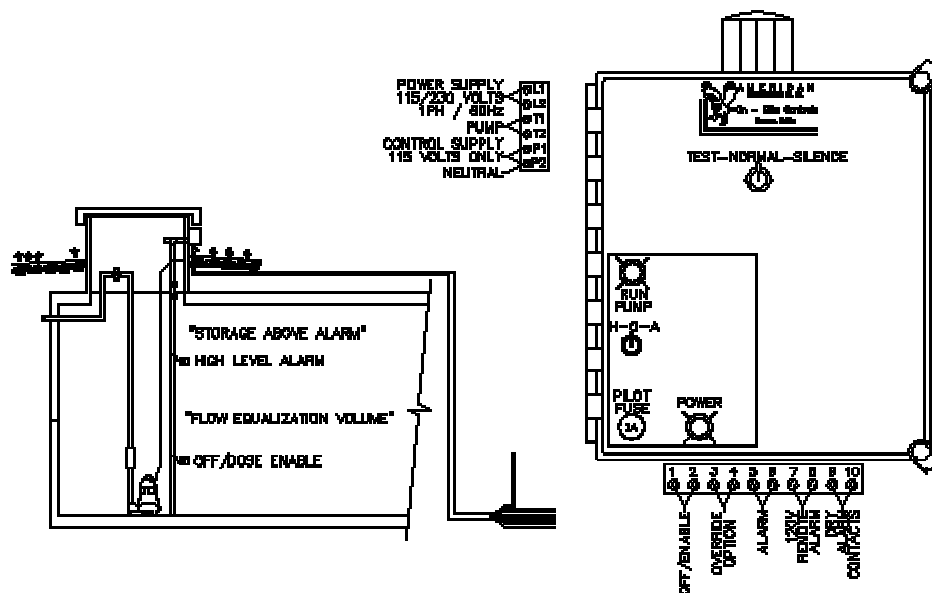


SUBMERSIBLE PUMP

The pump is typically a 1/2 hp, 115-volt, 1 phase septic effluent pump with 1/2" solids handling capacity.

PUMP DISCHARGE KIT & FLOAT ROD W/FLOATS

Included in package is a shut off valve, quick disconnect, check valve, and adapters, no weep hole should be placed in pipe. Vertical float installation is recommended as shown.



ACCESS HATCH AND RISER

Lightweight riser and lid is an available option.

Copyright ©, American Manufacturing Company, Inc., 2000