



AMERICAN ONSITE PRODUCTS

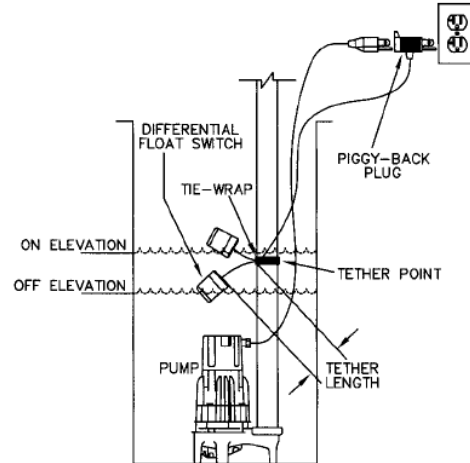
FLOAT SWITCHES



ENVIRONMENTALLY SAFE WIDE-ANGLE **MECHANICAL** DIFFERENTIAL FLOAT SWITCH

These enclosed "PIGGY-BACK" float switches are designed to operate fractional horsepower pumps. The units may be used for pump-up, pump-down, alarm or pilot duty operation in most water pump applications. (Not for use in swimming pools.)

Tether length, inches	3	4	6	8	10	12
Water pumped, inches	7	8	11	14	17	21



ALARM & PILOT DUTY FLOAT SWITCHES

These float switches are available for pilot duty operation. They are enclosed in durable and chemically stable polypropylene. They are available in 2 amp ratings and various lengths.

MODEL NUMBER SYSTEM

$\frac{\quad}{1} / \frac{\quad}{2} / \frac{\quad}{3} / \frac{\quad}{4}$

1. FLOAT TYPE, A-ALARM, D-DIFFERENTIAL ADD "H" FOR HEAVY DUTY SWITCH
2. NORMALLY OPEN (O) OR CLOSED (C)
3. LENGTH IN FEET
4. "P" IF PLUG (1-115V, 2-230V)

~ EXAMPLE: DO15P1-DIFFERENTIAL NORMALLY OPEN 15' W/ 115V PLUG

ITEM	DESCRIPTION
DC15	FLOAT DC15 DIFF., N.C., ABS, 13A, 15'
DC15P1	FLOAT DC15P1 DIFF., N.C., ABS, 13A, 15', 110V
DC30	FLOAT DC30 DIFF., N.C., POLY, 13A, 30'
DC30P1	FLOAT DC30P1 DIFF., N.C., ABS, 13A, 30', 110V
DHO15	FLOAT DHO15 DIFF., N.O., ABS, 15A, 15'
DHO15P1	FLOAT DHO15P1 DIFF., N.O., ABS, 15A, 15', 110V
DO10P1	FLOAT DO10P1 DIFF., N.O., ABS, 13A, 10', 110V
DO15	FLOAT DO15 DIFF., N.O., ABS, 13A, 15'
DO15P1	FLOAT DO15P1 DIFF., N.O., ABS, 13A, 15', 110V
DO15P2	FLOAT DO15P2 DIFF., N.O., ABS, 13A, 15', 230V
DO15W	FLOAT DO15W DIFF., N.O., ABS, 13A, 15', W
DO30	FLOAT DO30 DIFF., N.O., ABS, 13A, 30'
DO30P1	FLOAT DO30P1 DIFF., N.O., ABS, 13A, 30', 110V
DO50	FLOAT DO50 DIFF., N.O., ABS, 13A, 50'
PO15	FLOAT PO15 PILOT, N.O., POLY, 10A, 15'
PO15W	FLOAT PO15W PILOT, N.O., POLY, 10A, 15', W
PO20	FLOAT PO20 PILOT, N.O., POLY, 10A, 20'
PO20W	FLOAT PO20W PILOT, N.O., POLY, 10A, 20', W
PO30	FLOAT PO30 PILOT, N.O., POLY, 10A, 30'
PO30W	FLOAT PO30W PILOT, N.O., POLY, 10A, 30', W
PO50	FLOAT PO50 PILOT, N.O., POLY, 10A, 50'