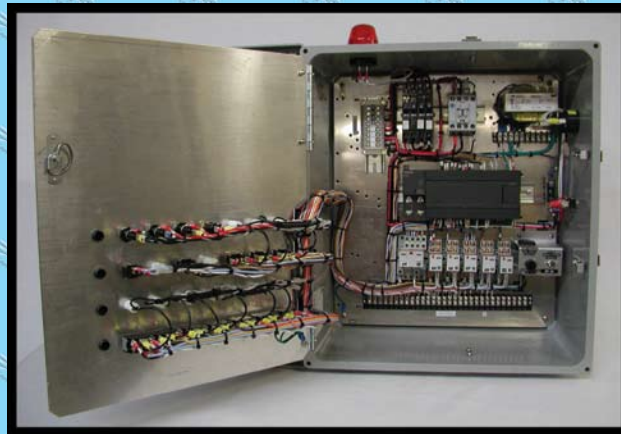




AMERICAN MANUFACTURING COMPANY, INC.

www.americanonsite.com ~ 1-800-345-3132

WASTEWATER & WATER SYSTEM CONTROL PANELS



THE LEADER IN INNOVATIVE ONSITE WASTEWATER PRODUCTS AND SYSTEMS

- *Equalization Panels*
- *Simplex and Duplex Pump Panels*
- *Drip Dispersal Control Panels*
- *Water System Control Panels*
- *Accessories including Tank Alarms, Bull Run™ Valves, Float Switches, Cool Guides™ and more*

MISSION STATEMENT

American Manufacturing Company, Inc. is dedicated to providing state-of-the-art onsite control products and systems with a highly trained technical support staff. We will maintain our leadership position in the industry by offering quality products, superior technical services and sustainable decentralized onsite systems for distributed wastewater management.

HISTORY

Over the last 25 years, American Manufacturing Company, Inc. has become a leader in the onsite wastewater industry; developing products and systems for economically viable and environmentally friendly applications. American's engineers, soil scientists, and electrical designers, have been working with regulators, educators and engineering firms, to create industry standards that are considered the benchmarks for creating optimal water and wastewater systems.

From innovative onsite products, such as the Bull Run Valve™, The Cool Guide™, Dial-a-Flow™ and Perc-Rite® Drip Equipment, to off-the-shelf Drip Dispersal Systems and Custom Engineered, Large Flow Drip Systems with Telemetry and SCADA capabilities, American leads the way in achieving long-term, successful applications. With multiple manufacturing, customer service and technical support centers, along with a network of stocking distributors and specification representatives, American's ability to assist you with your control needs, ranging from alarm panels to large flow drip dispersal systems, is unparalleled.

PRODUCTS AND SERVICES

- ***Control Panels***
- ***Onsite Products and Accessories***
- ***Pre-Engineered Drip Systems***
- ***Telemetry and SCADA Services***
- ***Operating and Maintenance Services***
- ***Start-Up and Technical Support***

Timer Pump Controls



Model # DEPRAB124-AJLP(C)RX(12)

Timer pump control panels are designed to provide flow equalization to any pressure dosed system utilizing a repeat cycle timer and float switch inputs. When a float switch indicates to the control panel that there is sufficient water to begin a dosing sequence, the system cycles between a rest time (pump off time) and a run time (pump on time). Hand-Off-Auto (HOA) switches are provided to allow the system to be manually operated. The controller is flexible and may be used with two to four float switches. Timer controls can be easily configured to automatically manage peak flow events and demand dose overrides.

Specifications:

- Simplex or Duplex
- NEMA 1 Steel or NEMA 4X Fiberglass Enclosures w/ Hinged Door
- Removable Aluminum Back Plate for Component Mounting
- Duty Rated Pump Contactor 16A @ 115V/230V
- Adjustable Pump Run Timer
- High Level Alarm w/ Light & Horn (40W Red Lexan Alarm Light w/ NEMA 4X Only)
- Timer Override Circuit (w/ Optional Counter)
- Hand-Off-Auto Toggle Switch
- Power, Alarm & Pump Run Indicator Lights
- 2A Alarm Fuse & 2A Control Fuse
- 110V Control Circuit Breakers
- 120/240V Pump Circuit Breakers
- Finger-Safe Terminal Blocks
- 115V Control Transformer w/ Fused Secondary (3 Phase Units Only)
- UL Listed

Options:

- 24 Hour, 15 Minute, Time Of Day or Weekly Time Clock
- Alarm Horn 85 db @ 10 ft.

ITEM	MODEL	DESCRIPTION
SEQ-B4196P	SEQAB124-ACEFJL	Simplex Control w/ NEMA 4X Enclosure, Auto Reset Alarm, Breaker, 120/240V Pump, Counter, ETM, Redundant Low Level Off
SEPR-B4669	SEPRAB124-AJLR	Simplex Control w/ NEMA 4X Enclosure, Auto Reset Alarm, Breaker, 120/240V Pump, PLC, Locking Hasp, Redundant Low Level Off
DEPR-B4666	DEPRAB124-AJLP(C)R	Duplex Repeat Cycle Timer Control w/ NEMA 4X Enclosure, Auto Reset Alarm, Breakers, Counters, 120/240V Pumps, PLC, Locking Hasp, Pump Fail Circuit (Current Sensor), Redundant Low Level Off
DEQ-B4656P	DEQAB124-CEJOP(C)	Duplex Control w/ NEMA 4X Enclosure, Alarm, Breakers, 120/240V Pumps, Counters, ETMs, Override Switch, Pump Fail Circuit (Current Sensor)
DEQ-B4658P	DEQAB124-ACEJLOP(C)	Duplex Repeat Cycle Control w/ NEMA 4X Enclosure, Auto Reset Alarm, Breakers, 120/240V Pumps, Counters, ETMs, Locking Hasp, Override Switch, Pump Fail Circuit (Current Sensor)

Simplex Pump Controls



Model # SAB124-AFJ1LX

Simplex pump controllers manage each dose based on volume of wastewater as signaled by float switches. Simplex Pump Controls are equipped with Hand-Off-Auto (HOA) switches which allow the pump to be manually operated. Separate control and pump circuits are provided in order ensure notification in the event of a high water condition.

Specifications:

- NEMA 1 Steel or NEMA 4X Fiberglass Enclosures w/ Hinged Door
- Removable Aluminum Back Plate for Component Mounting
- Duty Rated Pump Contactor (except SA4-B1432) 16A @ 115V/230V
- Hand-Off-Auto Toggle Switch
- Power Alarm & Pump Run Indicator Lights
- 2A Alarm Fuse & 2A Control Fuse
- Finger-Safe Terminal Blocks
- 115V Control Transformer w/ Fused Secondary (3 Phase Units)
- UL Listed

Options:

- Alarm Horn 85 db @ 10 ft.
- 110V Control Circuit Breakers
- 120/240V Pump Circuit Breakers
- Test-Off-Normal Toggle Switch
- High Level Indicator Light, 40W Red Lexan Alarm Light (Outdoor Units Only)

ITEM	MODEL	DESCRIPTION
SA1-B1250P	SA1-AJ	Simplex Control w/ NEMA 1 Enclosure, Auto Reset Alarm, 120/240V Pump
SA4-B1432	SA4-AFLX	Simplex Control w/ NEMA 4X Enclosure, Auto Reset Alarm, 120V Pump, Flasher, Locking Hasp, Loaded HOA Switch, Diff. Float Receptacle
SA4-B1528P	SA4-AFJL	Simplex Control w/ NEMA 4X Enclosure, Auto Reset Alarm, 120/240V
SAB-B1101P	SAB121-J	Simplex Control w/ NEMA 1 Enclosure, Alarm, Breakers, 120/240V Pump
SAB-B1559P	SAB124-AFJL	Simplex Control w/ NEMA 4X Enclosure, Auto Reset Alarm, Breakers, 120/240V Pump, Flasher, Locking Hasp

Duplex Pump Controls



Model # DAB124-ACFJL

Duplex pump controllers manage two pumps and each dose based on volume of wastewater as signaled by float switches. Duplex Controls are equipped with Hand-Off-Auto (HOA) switches which allow the pump to be manually operated. Separate control and pump circuits are provided in order to ensure notification in the event of a high water condition. If one pump fails, the control may be operated as a simplex system by simply placing the demand pump's H-O-A switch in the "Off" thus allowing normal simplex operation to continue until repairs can be made.

Specifications:

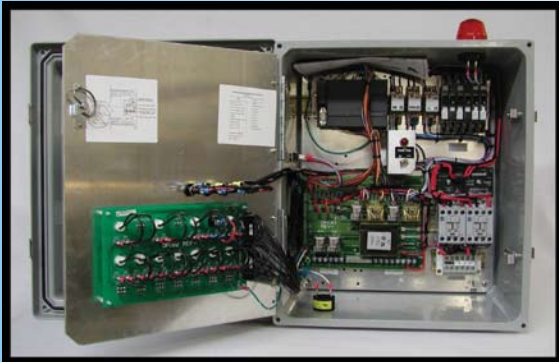
- NEMA 1 Steel or NEMA 4X Fiberglass Enclosures w/ Hinged Door
- Removable Aluminum Back Plate for Component Mounting
- Duty Rated Pump Contactor 16A @ 115V/230V
- High Level Alarm w/ Light & Horn (40W Red Lexan Alarm Light w/ NEMA 4X Only)
- Electro-Mechanical Pump Alternator
- Lag Pump Float Terminals
- Hand-Off-Auto Toggle Switch
- Power Alarm & Pump Run Indicator Lights
- 2A Alarm Fuse & 2A Control Fuse
- 110V Control Circuit Breakers
- 120/240V Pump Circuit Breakers
- Finger-Safe Terminal Blocks
- 115V Control Transformer w/ Fused Secondary (3 Phase Units Only)
- UL Listed

Alarm Option:

- Alarm Horn 85 db @ 10 ft.
- Test-Off-Normal Toggle Switch

ITEM	MODEL	DESCRIPTION
DAB-B2221P	DAB111-J	Duplex Control w/ NEMA 1 Enclosure, Alarm, Breaker, 120/240V Pump
DAB-B2248P	DAB121-CJ	Duplex Control w/ NEMA 1 Enclosure, Alarm, Breaker, 120/240V Pump, Counter
DAB-B2431P	DAB124-ACEFJL	Duplex Control w/ NEMA 4 Enclosure, Auto Reset Alarm, Breaker, 120/240V Pump, Counter, ETMs, Flasher, Locking Hasp
DAB-B2500P	DAB124-AFJL	Duplex Control w/ NEMA 4 Enclosure, Auto Reset Alarm, Breaker, 120/240V Pump, Flasher, Locking Hasp

Drip Dispersal System Controls



Model # DP124-DAB124-AHJLP(C)RX (DVC/ZM)

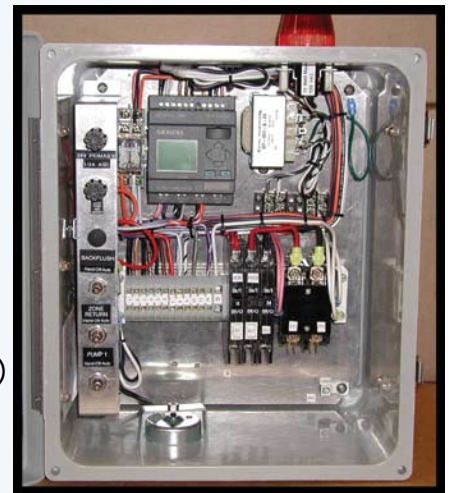
Drip pump control panels are based on the American Perc-Rite® Patent operating sequence. Simplex and duplex panels are available that operate on a single or multi-zone configuration. Drip controls provide for flow equalization with peak flow management and are designed on a repeat cycle timer basis. When a float signal tells the control panel there is enough water to begin a dose, the timer cycles between a rest time (off time) and a run time (pump on time). Hand-Off-Auto (H-O-A) switches allow running of the pump in hand in the event the microprocessor becomes inoperable. The controller is flexible to use with either three or four floats. All American drip controls automatically control field flushing of the drip tubing and filters.

Specifications:

- NEMA 4X Fiberglass Enclosures w/ Hinged Door
- Removable Aluminum Back Plate for Component Mounting
- Duty Rated Pump Contactor 16A @ 115V/230V/460V
- High Level Alarm w/ Light & Horn (40W Red Lexan Alarm Light w/ NEMA 4X Only)
- Hand-Off-Auto Toggle Switch
- Power, Alarm & Pump Run Indicator Lights
- 2A Alarm Fuse & 2A Control Fuse
- Finger-Safe Terminal Blocks
- 115V Control Transformer w/ Fused Secondary (3 Phase Units Only)
- UL Listed

Alarm Option:

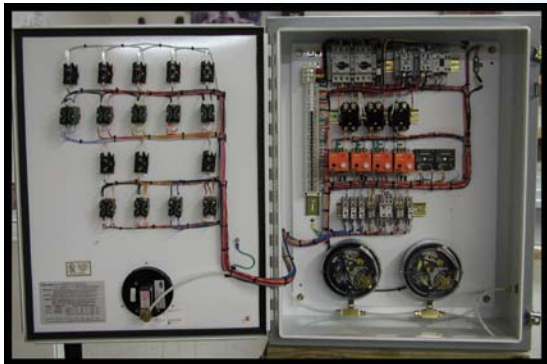
- Alarm Horn 85 db @ 10 ft.
- Test-Off-Normal Toggle Switch



Model # DP011-SAB124-AJL

ITEM	MODEL	DESCRIPTION
DP0-B9114	DP011-SAB124-AJL	One Zone Simplex Drip (Multi-Zone w/ Sequence Valve) Timed Dosing & Process Control w/ NEMA 4 Enclosure, Auto Reset Alarm, Breakers, 120/240V Pump, Locking Hasp, LCD Display, Auto Flushing
DP1-B9140P	DP122-SAB124-AHJLR	Two Zone Simplex Drip Timed Dosing & Process Control w/ NEMA 4X Enclosure, Auto Reset Alarm, Breakers, Hinged Inner Door, Locking Hasp, Redundant Low Level Off, Auto Flushing, 120/240V Pump, Internally Accessible Counters/ETMs
DP1-B9159	DP124-SAB124-AHJLRX (DVC/ZM)	Four Zone Simplex Drip Timed Dosing & Process Control w/ NEMA 4X Enclosure, Auto Reset Alarm, Breakers, 120/240V Pump, Hinged Inner Door, Locking Hasp, Redundant Low Level Off, Auto Flushing, Internally Accessible Counters/ETMs, Direct Voltage Cutout & Zone Master
DP1-B9146P	DP124-DAB124-AHJ1LP(C)R	Four Zone Duplex Drip Timed Dosing & Process Control w/ NEMA 4X Enclosure, Auto Reset Alarm, Breakers, 120/240V Pump, Hinged Inner Door, Locking Hasp, Pump Fail (Current Sensor), Redundant Low Level Off, Auto Flushing, Internally Accessible Counters/ETMs
DP1-B9163P	DP124S-SAB124-AHJLRX (2T/Vault)	Combination Four Zone Simplex Pretreat to Drip Timed Dosing & Process Control w/ NEMA 4X Enclosure, Auto Reset Alarm, 120/240V Pump, Breakers, Hinged Inner Door, Locking Hasp, Redundant Low Level Off, Treatment Unit/Sand Filter, Vaulted 2 Tank Configuration, Auto Flushing, Internally Accessible Counters/ETMs

Water System Controls



Model # H2P34-ST1-A7-2-J1LP(F)X(11)

Hydro-Pneumatic water system controls are designed to automatically control the air/water ratio in community water distribution systems. They are customized to meet individual needs and are designed with hard wired logic or may include Programmable Logic Control (PLC) applications. Storage and multiple well or booster pump controls are standard designs.

A variety of Telemetry Systems are available to monitor and control pumps or water tank levels over dedicated phone lines, wire, fiber optic cable, or wirelessly with radio signal communications.

The "P" series controls maintain proper water pressure in tanks with internally installed bladders (no air compressor or external air supply required). The system utilizes bourdon tube type pressure switches for precise pressure measurement and no other external components or sensors are necessary. The "H" Series controls maintain proper water pressure in tanks using external air supply. Variable Frequency Drive (VFD) systems can maintain constant pressure over a wide range of flows while maximizing energy conservation.

Specifications:

- NEMA 12 Steel or NEMA 4X Fiberglass Enclosures w/ Hinged Door
- Removable Aluminum Back Plate for Component Mounting
- Duty Rated Pump Contactor 16A @ 115V/230V
- 2A Alarm Fuse & 2A Control Fuse
- Finger-Safe Terminal Blocks
- 115V Control Transformer w/ Fused Secondary (3 Phase Units)
- Breakers and/or Motor Protectors
- UL Listed

Alarm Option:

- Low Hydro Level
- High Hydro Level
- Low Hydro Pressure
- High Hydro Pressure
- Low Suction Pressure w/ Cutout
- Low Well Level w/ Cutout
- Low Storage Level w/ Cutout
- High Storage Level



Model # H2AB32-A3-2-J3LL30XZ

Call American Manufacturing for a quotation at 1-800-345-3132.

Alarm Panels and Onsite Products



Model # A4-AFL (w/ AO10)

The Auto Reset Alarm Panels sound an alarm when water level rises due to a pump failure. The buzzer can be silenced by pushing the silence switch. Once the alarm condition has been corrected and the alarm float turned down, the buzzer will automatically reset to make the system fully operational again.

ITEM	MODEL	DESCRIPTION
A1-B0001P	A1-A	Alarm Control w/ NEMA 1 Enclosure (w/ AO10 Float)
A1-B0013P	A1-AX	Alarm (Latching) Control w/ NEMA 1 Enclosure (No Float)
A4-B0510P	A4-AFL	Alarm Control w/ NEMA 4 Enclosure, Flasher & Locking Hasp (w/ AO10 Float)
TA1	TA1	Tank Alarm w/ Float
TA3	TA3	Outdoor Tank Alarm w/ Float

ITEM	DESCRIPTION
BRV4	Bull Run Valve 4"
BRVBULK	Bull Run Valve & Key Only
BRVCIRISER	Bull Run Valve Riser w/ Cast Cover
BRVKEY28	Bull Run Valve Key 28"
BRVKEY36	Bull Run Valve Key 36"
BRVKEY48	Bull Run Valve Key 48"
BRVKEY60	Bull Run Valve Key 60"
BRVKIT	Bull Run Valve Kit Complete (Valve, Key 28", Plug & Adapter)
BRVMOTOR4	Bull Run Valve Motorized

Bull Run® Valve

The Bull Run® Valve is designed to split flows to septic fields or systems. The leak-proof and external operating design ensures no contact with wastewater.



Item # BRV4



Item # COOLGUIDE25

Cool Guide®

The Cool Guide® distributes the flow of effluent around a motor in a wastewater pumping application in a manner that allows motor cooling without the mixing of residual solids.

ITEM	DESCRIPTION
COOLGUIDE15	Laminar Flow Collar 6", 15 GPM
COOLGUIDE25	Laminar Flow Collar 8", 25 GPM
COOLGUIDE40	Laminar Flow Collar 8", 40 GPM

ITEM	DESCRIPTION
DIAL4BLACK	Dial-A-Flow Black 4" for ADS
DIAL4GRAY	Dial-A-Flow Gray 4" for SDR35 SCH40 & ASTM3034 Pipe
DIAL4GREEN	Dial-A-Flow Green 4" for S&D

Dial-A-Flow®

The Dial-A-Flow® is a device used to equally distribute flow out of distribution boxes. With the eccentrically located opening, the installer can rotate the Dial-A-Flow® to balance all discharge ports for



Item # DIAL4GRAY

American Onsite Products & Accessories



Item # AO10

Float Switches

Float switches are utilized to signify specific liquid levels and provide an indication to the control panel. They are enclosed in durable and chemically stable polypropylene or Acrylonitrile Butadiene Styrene (ABS). They are available with pump duty or control duty amp ratings, normally open (NO) or normally closed (NC) switches and various lengths, with or without plug connectors.

ITEM	DESCRIPTION
PO15 MECHNA	Float, Pilot Duty, Mechanical, Normally Open, Narrow Angle 15'
PO15 MECHNAW	Float, Pilot Duty, Mechanical, Normally Open, Narrow Angle 15', Weight
DHO15	Float, Pump Duty, Mechanical, Normally Open, ABS, 15A, 15'
DHO15P1	Float, Pump Duty, Mechanical, Normally Open, ABS, 15A, 15', 110V Plug
DO15P1	Float, Pump Duty, Mechanical, Normally Open, ABS, 13A, 15', 110V Plug
DO15P2	Float, Pump Duty, Mechanical, Normally Open, ABS, 13A, 15', 230V Plug
DO30	Float, Pump Duty, Mechanical, Normally Open, ABS, 13A, 30'
DO30P1	Float, Pump Duty, Mechanical, Normally Open, ABS, 13A, 30', 110V Plug
DC15	Float, Pump Duty, Mechanical, Normally Closed, ABS, 13A, 15'
DC15P1	Float, Pump Duty, Mechanical, Normally Closed, ABS, 13A, 15', 110V Plug
DC15P2	Float, Pump Duty, Mechanical, Normally Closed, ABS, 13A, 15', 230V Plug
PO15	Float, Pilot Duty, Mercury, Normally Open, Polypropylene, 10A, 15'
PO15W	Float, Pilot Duty, Mercury, Normally Open, Polypropylene, 10A, 15', Weight
PO20	Float, Pilot Duty, Mercury, Normally Open, Polypropylene, 10A, 20'
PO20W	Float, Pilot Duty, Mercury, Normally Open, Polypropylene, 10A, 20', Weight
PO30	Float, Pilot Duty, Mercury, Normally Open, Polypropylene, 10A, 30'
DC30	Float, Pump Duty, Mercury, Normally Closed, Polypropylene, 13A, 30'
DC30P1	Float, Pump Duty, Mercury, Normally Closed, ABS, 13A, 30', 110V Plug

Float Accessories

Float bars, pipe clamps and weights for float switch applications.



Item # SWITCHBARDRIP4



Item # SWITCHCLAMP

ITEM	DESCRIPTION
FLOATBAR	4 Float Stainless Steel Float Bar
FLOATBAR3	3 Float Stainless Steel Float Bar
SWITCHBARVERT2	Float Bar 2 w/ (2) DO15 Floats
SWITCHBARVERT3	Float Bar 3 w/ (3) DO15 Floats
SWITCHBARVERT4	Float Bar 4 w/ (4) DO15 Floats
SWITCHCLAMP	Float Wire Pipe Clamp (Stainless Steel)
WH	Float Weight (Half Only)

Control Panel Model Selection Guide

This catalog lists American's Standard Control Panel offerings. The next two pages explain the product numbering system. For non-standard panel offerings, assemble a model number using the following tables and call American for price and delivery information at 1-800-345-3132.

CONTROL SERIES

A-ALARM OPTION

B-BREAKER OPTION

ENCLOSURE TYPE

CONTROL PANEL OPTIONS

Control Series:

S	Simplex	SEQ	Simplex Equalization
D	Duplex	SEPR	Simplex Equalization RCT (w/ PLC)
T	Triplex	SEPT	Simplex Equalization TOD (w/ PLC)
Q	Quadplex	DEPR	Duplex Equalization RCT (w/ PLC)
M	Multiplex (five or more)	DEPT	Duplex Equalization TOD (w/ PLC)
MET	Multiplex Equalization TOD	MT	Multiplex Timed Dose On Demand
CSEPR	Combination Simplex Equalization RCT (w/ PLC)	CSEPT	Combination Simplex Equalization TOD (w/ PLC)

RCT = Repeat Cycle Timer

TOD = Time Of Day Timer

PLC = Programmable Logic Control

Alarm Option:

(A) Indicator Light & Buzzer On Indoor Units, Red Lexan Top Mounted Light & Buzzer On Outdoor Units

Breaker Option:

Place "B" for Breaker in designated space followed by the desired phase and voltage code.

PHASE:	1—Single phase	3—Three phase		
VOLTAGE:	1—120V	2—240V	4—460V	8—208v

On 3 phase systems, motor protectors are substituted for breakers and require a "P" instead of the "B". If fusible disconnects for pumps are desired in place of pump breakers then replace the "P" with an "F", followed by the desired phase and voltage.

Enclosure Option:

1—NEMA 1	2—NEMA 12	3—NEMA 3R
4—NEMA 4X	4S—NEMA 4 (steel)	4SS—NEMA 4X (stainless steel)
7—NEMA 7 (explosion proof)		

STANDARD OPTIONS LIST

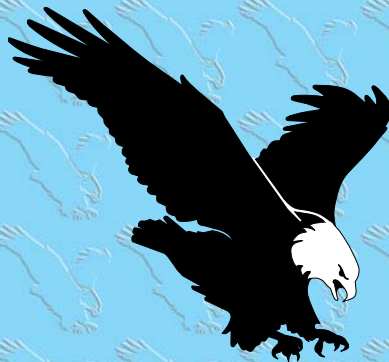
* A	Auto Reset Alarm Circuit	P(C)	Pump Fail Circuit By Current Sensor
B	Bell/Horn (4" weatherproof)	P(F)	Pump Fail Circuit By Flow Switch
* C	Cycle Counter	Q	Quick Disconnect Operator
D	Delayed Lag Pump Timer	* R	Redundant Off Float Switch
* E	Elapsed Time Meter	R(A)	Redundant Off With Alarm
* F	Flasher	S	Seal Fail Indicator
F(L)	Flashing Light	S(R)	Seal Fail Relay W/ Indicator
F(S)	Flashing Strobe Light	S(A)	Seal Fail Relay W/ Alarm
F(C)	Flashing Light W/ Protective Cage	T	Thermal Cut-out
G	Gell Cell Battery	T(I)	Thermal Cut-out W/ Indicator
H	Hinged Inner Door	T(A)	Thermal Cut-out W/ Alarm
I(5)	Intrinsically Safe Float Switch Relays (508)	U	Utility Receptacle
I(9)	Intrinsically Safe Float Switch Relays (913)	U(G)	Utility Receptacle (GFI)
* J	Contactors/Breaker Upgrade	U(W)	Utility Receptacle (Weatherproof)
K	External Capacitor Installation	V	Voltage Monitor
L	Locking Hasp	V(P)	Voltage/Phase Monitor
L(1)	Lightning Arrestor 1 Wire W/ Gnd	W	Weather Heater
L(2)	Lightning Arrestor 2 Wire W/ Gnd	W(1)	Weather Heater W/ Blower (100W)
L(3)	Lightning Arrestor 3 Wire W/ Gnd	W(2)	Weather Heater (200W)
L(4)	Lightning Arrestor 3 Wire W/ Gnd (460)	X	Extra Options
M	Main Breaker/Disconnect	Y	24 Volt Float Switch Circuit
N	Nema Rated Starter	Z	Oil tight Lights & Switches
O	Override Switch For Alternator		

* Standard Options

Other options are available. For a complete description of all options, see specifications. Any option not listed above requires an "X" at the end of the model number and the appropriate description.

EXTRA OPTIONS: A list of standard additional options provided by American Onsite Controls, but any user-selected option is also available.

- | | |
|---|-----------------------------------|
| 1. Overload Reset Buttons (22mm) Through Door | 11. 120 Volt Solenoid Circuit |
| 2. Float Switch Indicator Lights | 12. Ball Valve Actuator Circuit |
| 3. Plexiglas Enclosure Window | 13. Sand Filter High Level |
| 4. Branch Power Circuit | 14. Telephone Dialer Installation |
| 5. Manual Emergency Transfer Switch | 15. Drip Shield Kit |
| 6. Generator Receptacle/Plug | 16. Floor Stand Kit |
| 7. Electrode Level Control | 17. Transformer Upgrade |
| 8. Aerator Fail Circuit | 18. Circuit Breaker Padlock |
| 9. 24 Hour Clock Timer | 19. Full Frame Breakers |
| 10. Pump Run Timer | 20. Power Fail Circuit |



American Manufacturing Company, Inc.

www.americanonsite.com ~ 1-800-345-3132



P.O. Box 97
Elkwood, VA 22718